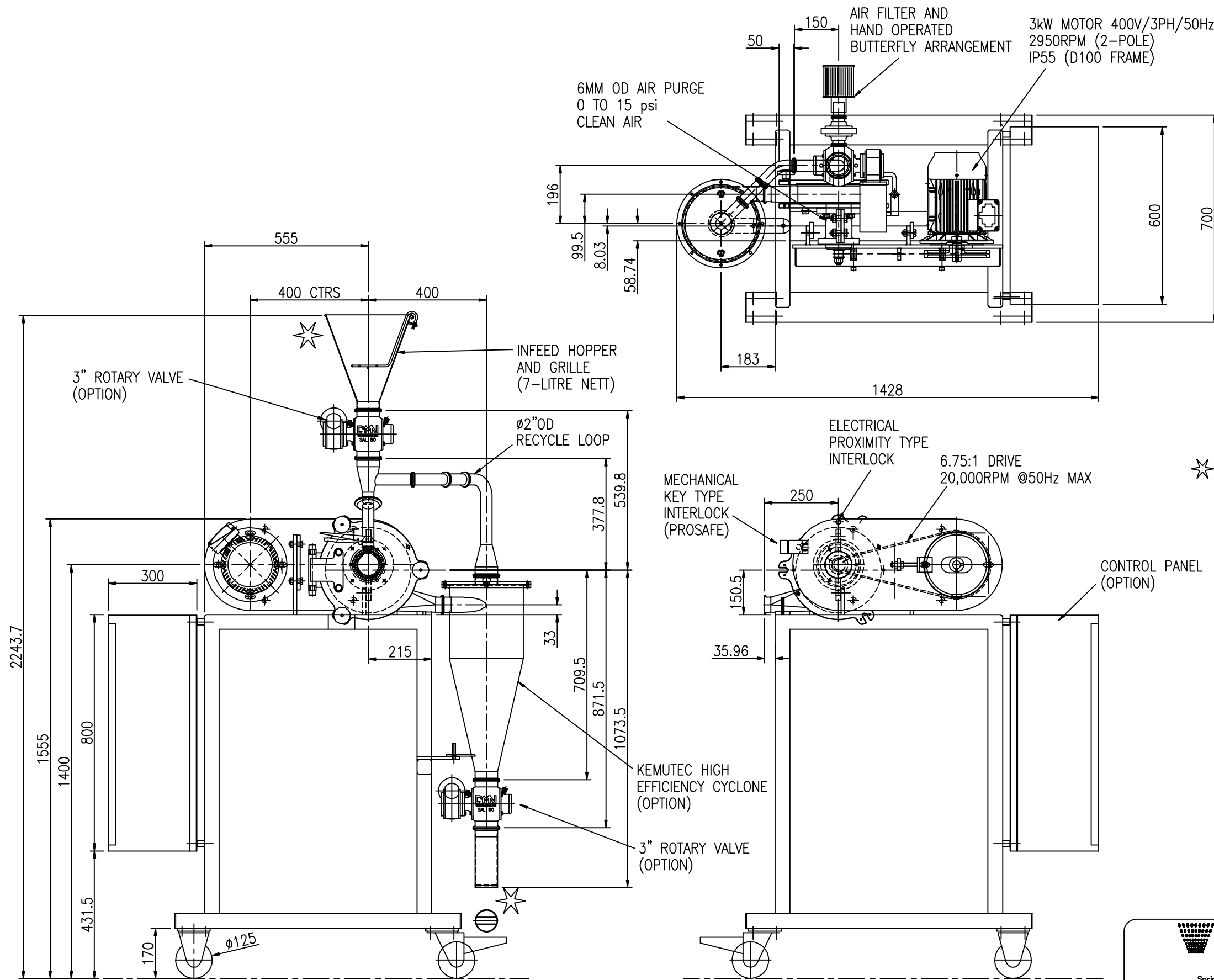


DO NOT SCALE DRAWING - IF IN DOUBT ASK



★ NOTE  
WHEN SAFETY GRILLS ARE NOT FITTED BY KEMUTEC INLET AND OUTLET CONNECTION MUST BE SUITABLY GUARDED BY CLIENT TO PREVENT OPERATOR ACCESS TO ROTATING/MOVING PARTS IN LINE WITH RELEVANT SAFETY REGULATIONS (SEE BS EN 294/BS5304:1988).

NOTE  
WHEN THE CONTROL PANEL IS NOT SUPPLIED BY KEMUTEC SAFETY INTERLOCKS MUST BE WIRED INTO MOTOR CONTROL CIRCUIT (BY CLIENT) TO PREVENT THE MOTOR RUNNING, OR DE-ENERGISE MOTOR IF ALREADY RUNNING, SHOULD THE INTERLOCKS BE ACTUATED BY OPENING OF THE HOPPER LID OR HOPPER REMOVAL OR OTHER

AIR PURGE : CLEAN DRY REGULATED COMPRESS AIR  
APPROX PRESSURE 0 -15 PSI  
APPROX GAS FLOW 0 - 20 LITRES/MINUTE

APPROX WEIGHT : 217 Kg

ALL CABLE, PLUGS, GLANDS & WIRING TO THE CONTROL PANEL BY THE CLIENT

**Kek-Gardner**  
Powder Processing Excellence  
Kek-Gardner Ltd  
Springwood Way, Macclesfield, Cheshire, SK10 2ND  
Tel: +44 (0)1625 412000 Fax: +44(0)1625 412002  
Email: sales@kekgardner.co.uk Web: www.kekgardner.com

DRAWN BY <i>M. G. Lawton</i>
CHECKED BY
APPROVED BY
SCALE 1:10
DATE 11/09/03

THIS DRAWING IS THE PROPERTY OF KEK-GARDNER LTD AND MUST NOT BE COPIED OR SHOWN TO A THIRD PARTY WITHOUT THE WRITTEN CONSENT OF THIS COMPANY. © <small>NOT PLOTTED</small>	<b>DRAWING SPECIFICATIONS</b> UNLESS OTHERWISE STATED Screw threads to BS3643 ISO Metric Coarse Pitch Series (Medium Fit) Surface Finish to BS1134 in micrometres Welding Symbols to BS499 Part 2 Dimension & Geometrical Tolerances to BS308 Limits & Fits to BS4500 Remove all sharp edges and burrs	<b>TOLERANCE SPECIFICATIONS</b> UNLESS OTHERWISE STATED SHEET METAL DIMENSIONS 0 to 300 ± 1.00 300 to 1000 ± 2.00 Over 1000 ± 3.00 ANGULAR DIMENSIONS ± 0°-30°	<b>MACHINED DIMENSIONS</b> 0 to 150 ± 0.30 Over 150 ± 0.60 UNMACHINED DIMENSIONS 0 to 150 ± 0.50 Over 150 ± 1.50	ALL DIMENSIONS IN MILLIMETRES THIRD ANGLE PROJECTION
	For all material, weld and finish specifications refer to purchase/works order unless stated otherwise			

TITLE DATA SHEET 5H RECYCLE SYSTEM
DRAWING No A2 DS531
ISSUE A