

NOTES:-

1) INLET & OUTLET CONNECTIONS MUST BE SUITABLY GUARDED BY CLIENT TO PREVENT OPERATOR ACCESS TO ROTATING/MOVING PARTS IN LINE WITH RELEVANT REGULATIONS (BS EN 294/BS5304:1988 ETC)

2) ALL SAFETY INTERLOCKS MUST BE WIRED INTO MOTOR CONTROL CIRCUIT TO PREVENT THE MOTOR RUNNING OR DE-ENERGISE THE MOTOR IF ALREADY RUNNING SHOULD THE INTERLOCKS BE ACTUATED BY OPENING ANY DOOR. REFER TO INSTRUCTION MANUAL. INTERLOCKS PROVIDED WITH 1 PAIR N/C CONTACTS AND 1 PAIR N/O CONTACTS.

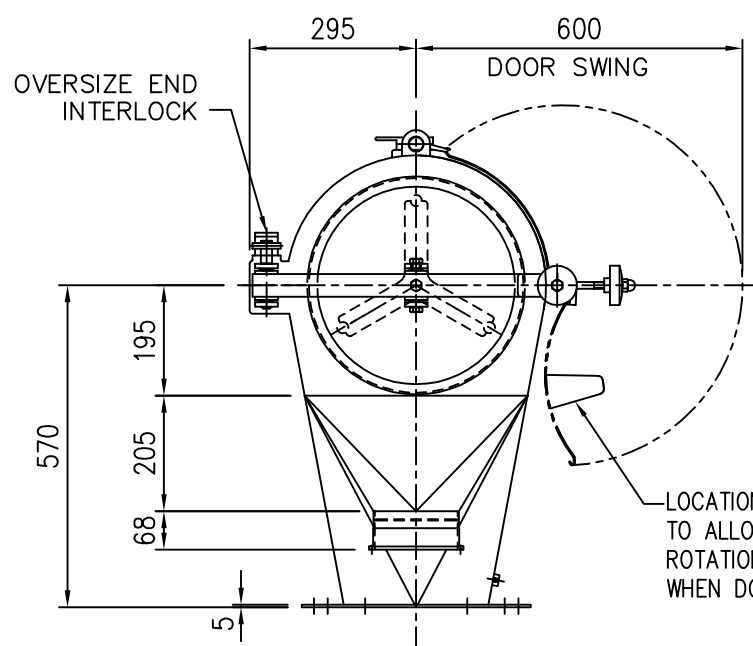
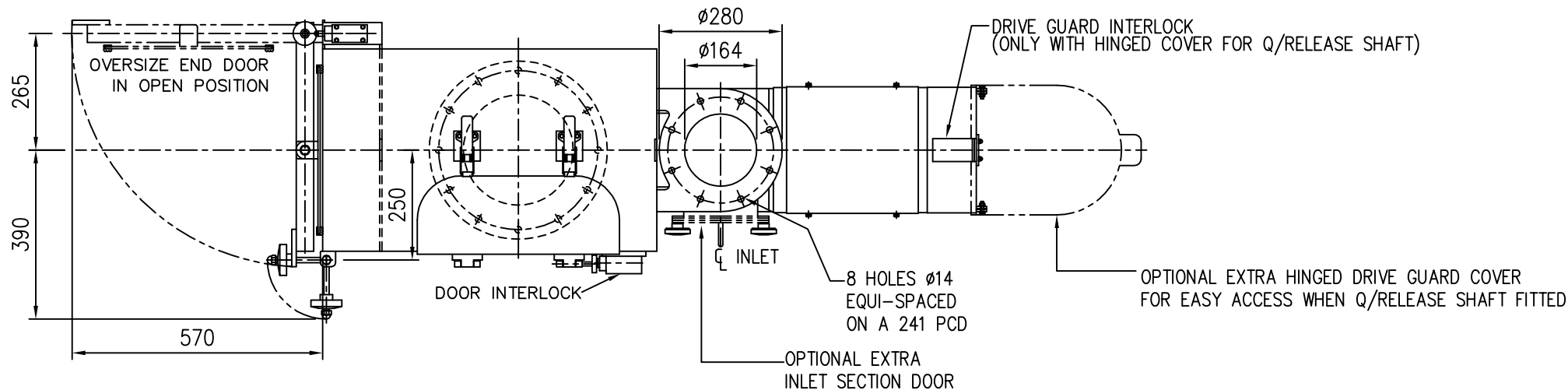
3) SCREEN AREA: 0.32m² (K650C)

4) APPROX NET WEIGHT: 200KG

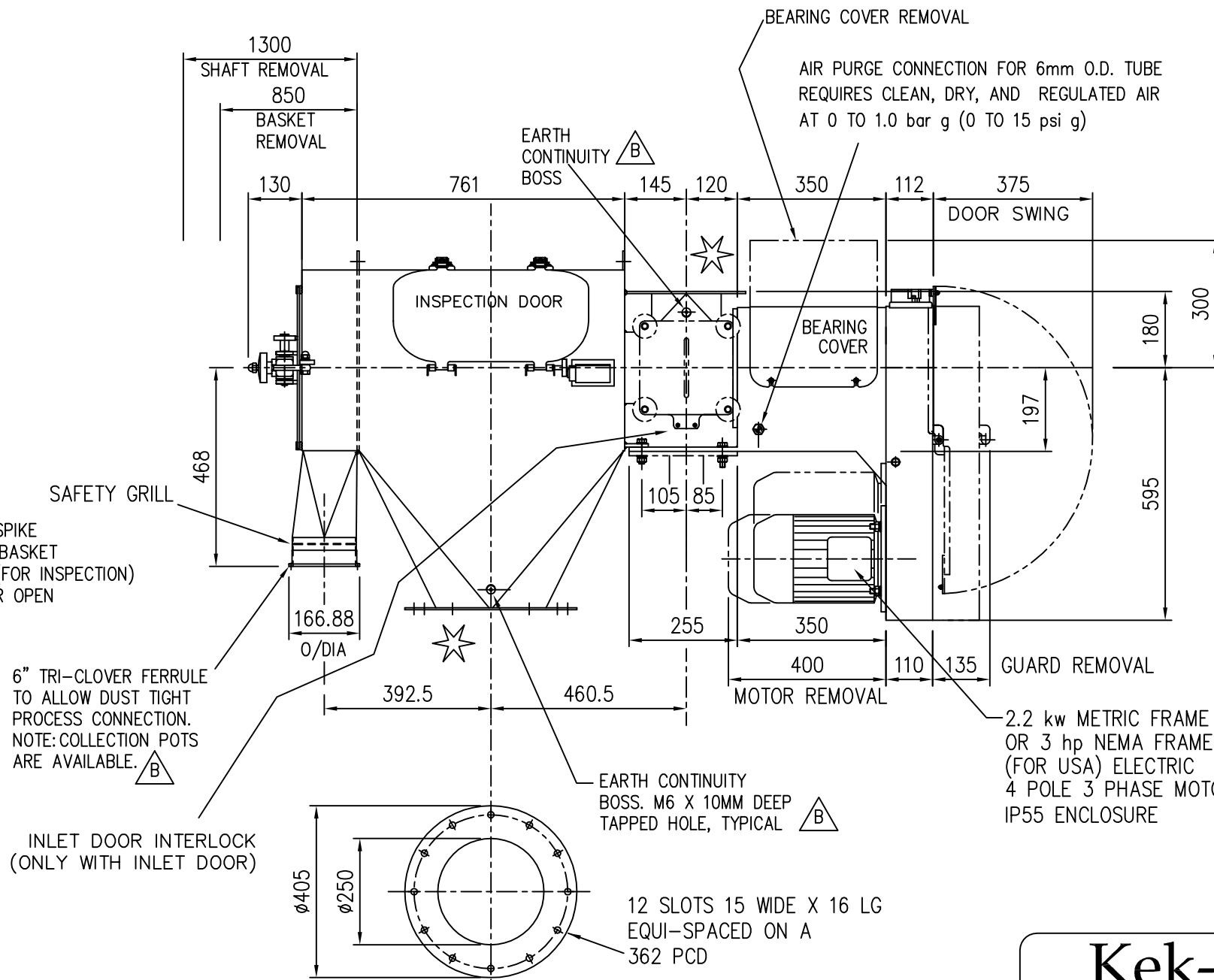
5) SIFTER SPEED 700RPM. ANTI-CLOCKWISE ROTATION WHEN VIEWED FORM THE OVERSIZE END

6) BOSSES PROVIDED TO FACILITATE EARTH CONTINUITY ACROSS INLET AND FINES OUTLET FLANGES.

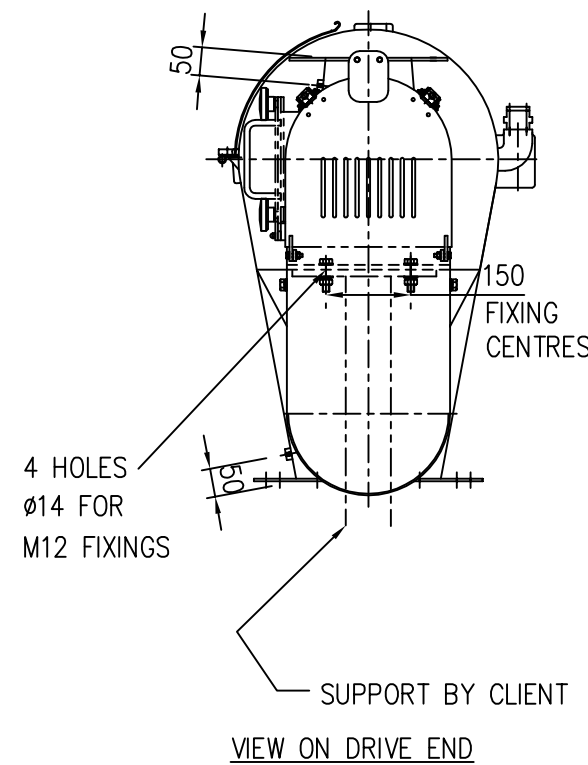
DO NOT SCALE DRAWING - IF IN DOUBT ASK



VIEW ON OVERSIZE END



FINES OUTLET FLANGE DETAIL



VIEW ON DRIVE END

Kek-Gardner

Kek-Gardner Ltd
Springwood Way, Macclesfield, Cheshire, SK10 2ND
Tel: +44 (0)1625 412000 Fax: +44(0)1625 412001

DRAWN BY

NR

CHECKED BY

APPROVED BY

SCALE 1:10

TITLE
K650C SIFTER ARRGT
C/W CANTILEVER SHAFT

DRAWING No
A2 DS474

ISSUE B
DATE 23/11/98

ISSUE B
OSE NOW
TRICLOVER WAS
PLAIN. EARTH
BOSSES ADDED
P.B 24/02/04

DRAWING SPECIFICATIONS
UNLESS OTHERWISE STATED

Screw threads to BS3643
ISO Metric Coarse Pitch Series (Medium Fit)
Surface Finish to BS1134 in micrometres
Welding Symbols to BS499 Part 2
Dimension & Geometrical Tolerances to BS308
Limits & Fits to BS4500
Remove all sharp edges and burrs

TOLERANCE SPECIFICATIONS
UNLESS OTHERWISE STATED

SHEET METAL DIMENSIONS 0 to 300 ± 1.00 300 to 1000 ± 2.00 Over 1000 ± 3.00	MACHINED DIMENSIONS 0 to 150 ± 0.30 Over 150 ± 0.60
ANGULAR DIMENSIONS ± 0°-30'	UNMACHINED DIMENSIONS 0 to 150 ± 0.50 Over 150 ± 1.50

ALL DIMENSIONS IN MILLIMETRES

THIRD ANGLE PROJECTION

For all material, weld and finish specifications refer to purchase/works order unless stated otherwise

THIS DRAWING IS THE PROPERTY OF KEK-GARDNER LTD AND MUST NOT BE COPIED OR SHOWN TO A THIRD PARTY WITHOUT THE WRITTEN CONSENT OF THIS COMPANY. ©

NOT PLOTTED