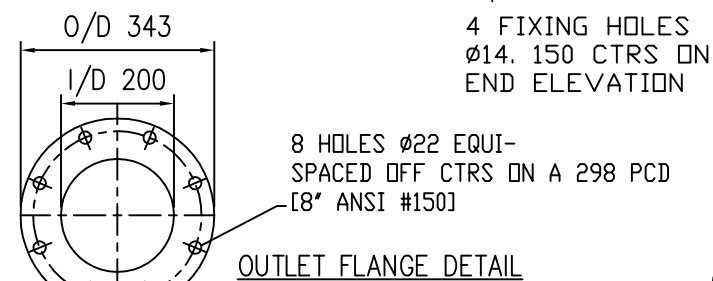
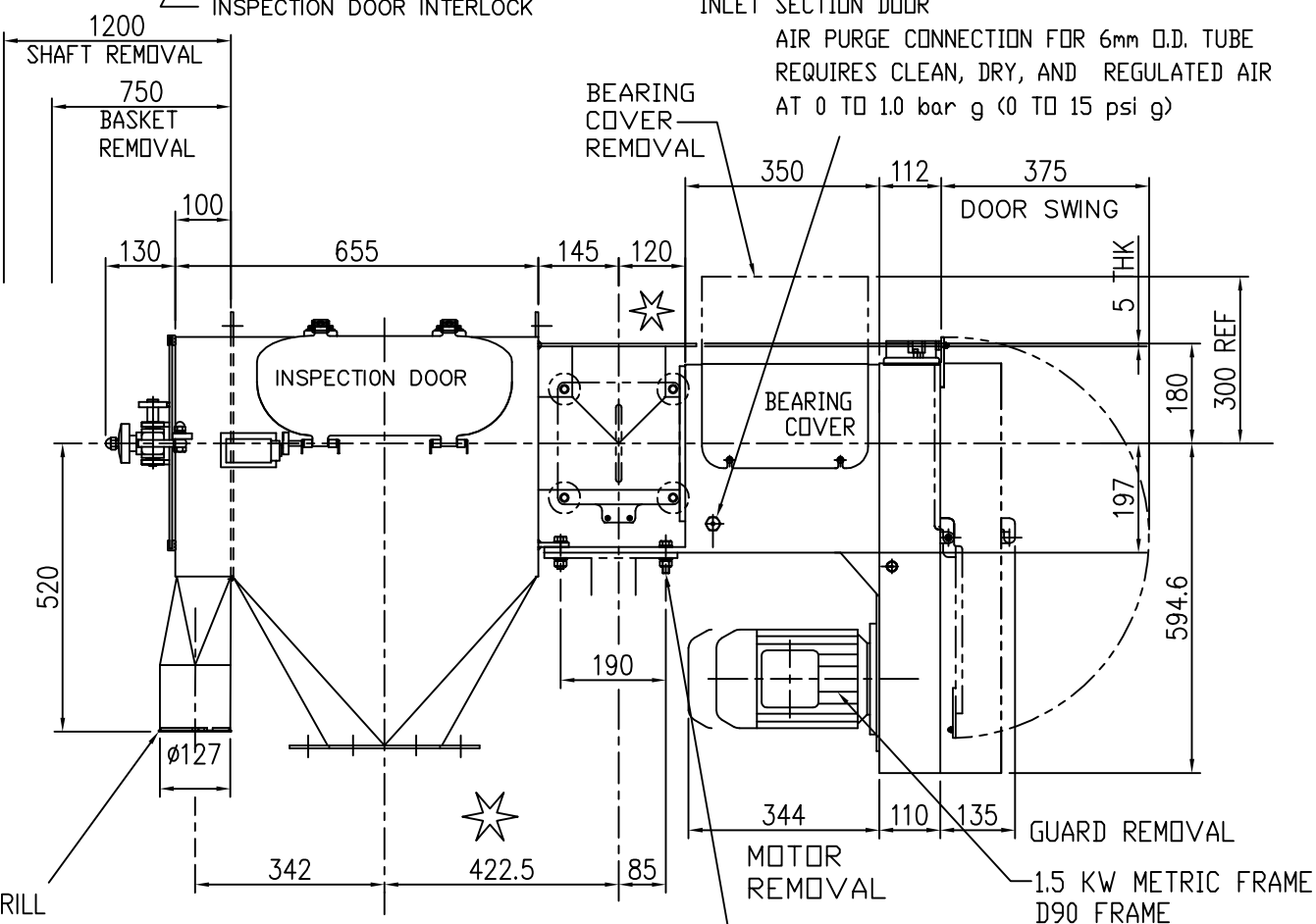
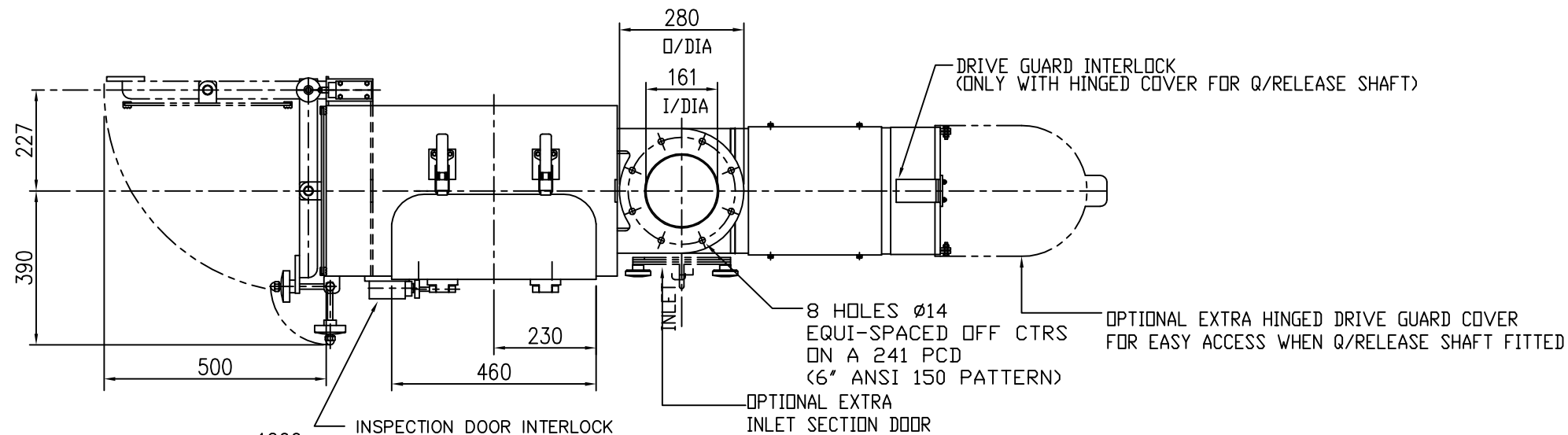


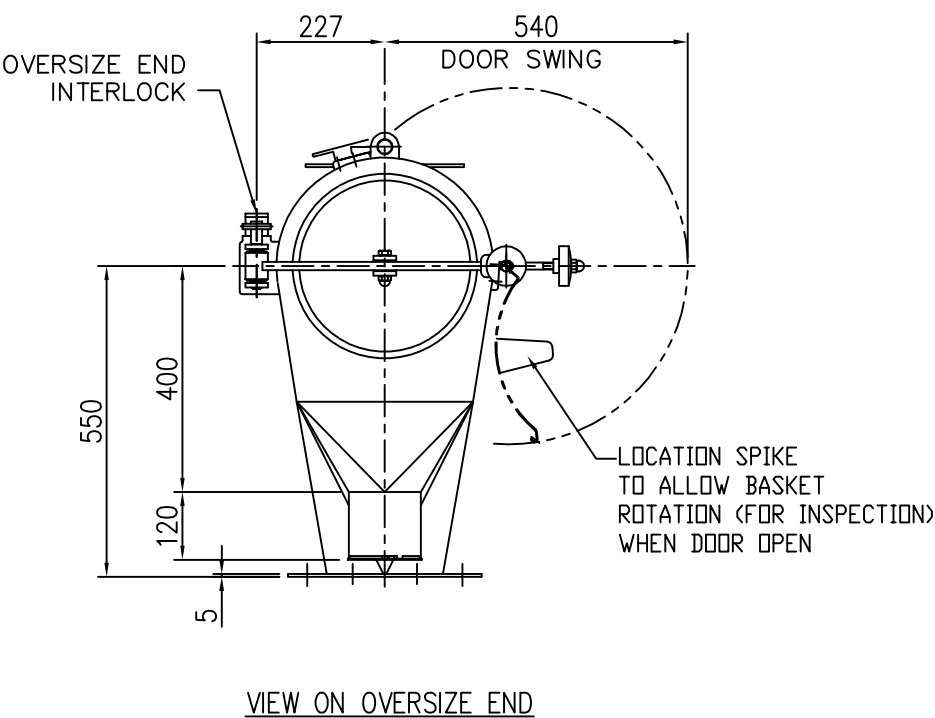
DO NOT SCALE DRAWING - IF IN DOUBT ASK

NOTES:

- 1) INLET & OUTLET CONNECTIONS MUST BE SUITABLY GUARDED BY CLIENT TO PREVENT OPERATOR ACCESS TO ROTATING/MOVING PARTS IN LINE WITH RELEVANT SAFETY REGULATIONS (BS EN 294/BS5304:1988 ETC)
- 2) ALL SAFETY INTERLOCKS MUST BE WIRED INTO MOTOR CONTROL CIRCUIT TO PREVENT THE MOTOR RUNNING OR DE-ENERGISE THE MOTOR IF ALREADY RUNNING SHOULD THE INTERLOCKS BE ACTUATED BY OPENING ANY DOOR REFER TO INSTRUCTION MANUAL INTERLOCKS PROVIDED WITH 1 PAIR N/C CONTACTS AND 1 PAIR N/O CONTACTS
- 3) SCREEN AREA: 0.19m²(K500C)
- 4) APPROX NET WEIGHT: 200kg
- 5) SIFTER SPEED 700 RPM ANTI-CLOCKWISE ROTATION WHEN VIEWED FROM OVERSIZE END



★ FINES OUTLET FLANGE DETAIL



| | | |
|--|------------------|----------------------------|
| <p>Kek-Gardner Powder Processing Excellence Kek-Gardner Ltd Springwood Way, Macclesfield, Cheshire, SK10 2ND Tel: +44 (0)1625 412000 Fax: +44(0)1625 412002 Email: sales@kekgardner.co.uk Web: www.kekgardner.com</p> | | DRAWN BY <i>E HOWEL</i> |
| | | CHECKED BY |
| TITLE K500C SIFTER R.H. DOOR CANTILEVER SIFTER | | APPROVED BY |
| DRAWING No A2 DS502 | | SCALE 1:10 |
| ISSUE A | DATE 23/10/00 | |

| | | | | | | | | | | | | | | | | | |
|--|--|--|------------------------|---------------------|-----------------|-----------------|--------------------|-----------------|------------------|--|--------------------|-----------------------|----------|-----------------|--|-----------------|--|
| <p>THIS DRAWING IS THE PROPERTY OF KEK-GARDNER LTD AND MUST NOT BE COPIED OR SHOWN TO A THIRD PARTY WITHOUT THE WRITTEN CONSENT OF THIS COMPANY. ©</p> | <p>DRAWING SPECIFICATIONS UNLESS OTHERWISE STATED</p> <p>Screw threads to BS3643 ISO Metric Coarse Pitch Series (Medium Fit) Surface Finish to BS1134 in micrometres Welding Symbols to BS499 Part 2 Dimension & Geometrical Tolerances to BS308 Limits & Fits to BS4500 Remove all sharp edges and burrs</p> | <p>TOLERANCE SPECIFICATIONS UNLESS OTHERWISE STATED</p> <table border="1"> <tr> <td>SHEET METAL DIMENSIONS</td> <td>MACHINED DIMENSIONS</td> </tr> <tr> <td>0 to 300 ± 1.00</td> <td>0 to 150 ± 0.30</td> </tr> <tr> <td>300 to 1000 ± 2.00</td> <td>Over 150 ± 0.60</td> </tr> <tr> <td>Over 1000 ± 3.00</td> <td></td> </tr> <tr> <td>ANGULAR DIMENSIONS</td> <td>UNMACHINED DIMENSIONS</td> </tr> <tr> <td>± 0°-30'</td> <td>0 to 150 ± 0.50</td> </tr> <tr> <td></td> <td>Over 150 ± 1.50</td> </tr> </table> | SHEET METAL DIMENSIONS | MACHINED DIMENSIONS | 0 to 300 ± 1.00 | 0 to 150 ± 0.30 | 300 to 1000 ± 2.00 | Over 150 ± 0.60 | Over 1000 ± 3.00 | | ANGULAR DIMENSIONS | UNMACHINED DIMENSIONS | ± 0°-30' | 0 to 150 ± 0.50 | | Over 150 ± 1.50 | <p>ALL DIMENSIONS IN MILLIMETRES</p> <p>THIRD ANGLE PROJECTION ☉</p> <p>For all material, weld and finish specifications refer to purchase/works order unless stated otherwise</p> |
| | SHEET METAL DIMENSIONS | MACHINED DIMENSIONS | | | | | | | | | | | | | | | |
| 0 to 300 ± 1.00 | 0 to 150 ± 0.30 | | | | | | | | | | | | | | | | |
| 300 to 1000 ± 2.00 | Over 150 ± 0.60 | | | | | | | | | | | | | | | | |
| Over 1000 ± 3.00 | | | | | | | | | | | | | | | | | |
| ANGULAR DIMENSIONS | UNMACHINED DIMENSIONS | | | | | | | | | | | | | | | | |
| ± 0°-30' | 0 to 150 ± 0.50 | | | | | | | | | | | | | | | | |
| | Over 150 ± 1.50 | | | | | | | | | | | | | | | | |
| NOT PLOTTED | | | | | | | | | | | | | | | | | |