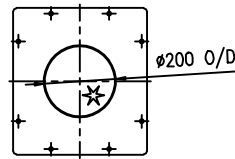


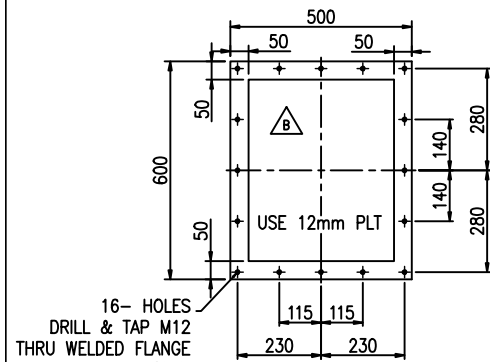
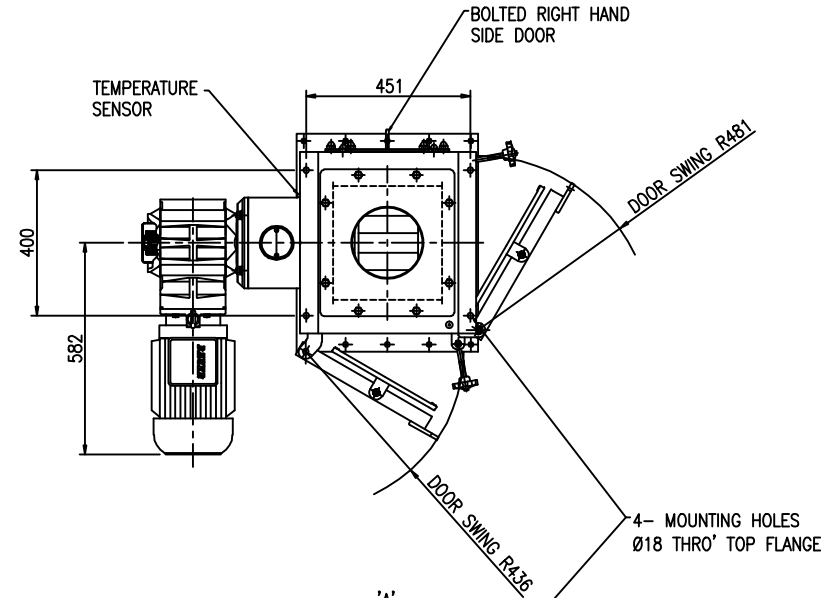
DO NOT SCALE DRAWING - IF IN DOUBT ASK

NOTES:

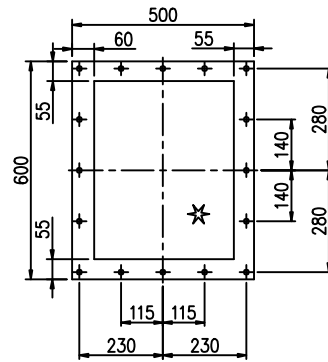
- * INLET / OUTLET CONNECTION MUST BE SUITABLY GUARDED BY CLIENT TO PREVENT OPERATOR ACCESS TO ROTATING PARTS IN LINE WITH RELEVANT SAFETY REGULATIONS (SEE EN 294/BS5304:1988).
- Ø6 OD PUSH-IN TUBE BULKHEAD CONNECTOR FOR SEAL PURGE, REQUIRES REGULATED SUPPLY OF CLEAN+DRY AIR/GAS(INERT) AT 0 TO 15 psig. (0 TO 1 bar.) 0.17 TO 0.7 cu.ft/min.(5 TO 20 lt./min.)
- MACHINE WEIGHTS
BODY / DRIVE ASSY 190 kg
- DIMENSIONS SET AS PER SAFETY OF MACHINERY STANDARDS EN 294 : 1992
- REFER TO KEMUTEC QUOTATION FOR SCOPE OF SUPPLY
- * INLET SPIGGOT SUPPLIED NOMINAL LENGTH. TO BE CUT TO SUIT ON INSTALLATION



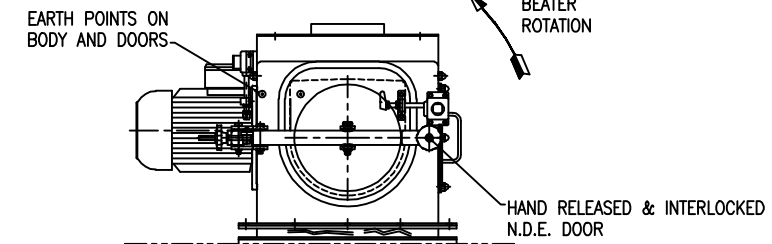
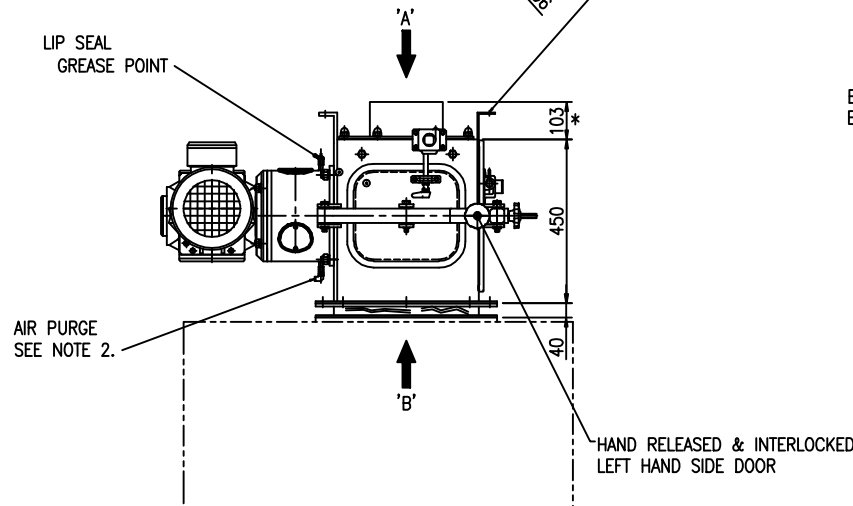
INLET DETAIL ON ARROW 'A'



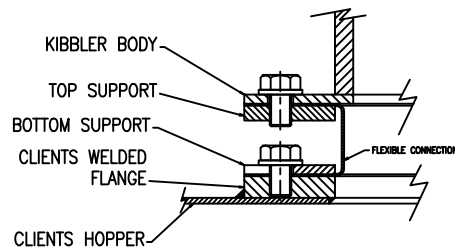
DETAIL OF CLIENTS HOPPER FLANGE



OUTLET DETAIL ON ARROW 'B'



CLIENTS HOPPER NTS



SCRAP SECTION THRU FLEXIBLE OUTLET DETAILING CLIENTS FLANGE REQUIREMENTS

SCALE 1:2

BASED ON DRAWING 7685-003

<p>THIS DRAWING IS THE PROPERTY OF KEK-GARDNER LTD AND MUST NOT BE COPIED OR SHOWN TO A THIRD PARTY WITHOUT THE WRITTEN CONSENT OF THIS COMPANY. ©</p> <p>NOT PLOTTED</p>	<p>DRAWING SPECIFICATIONS UNLESS OTHERWISE STATED</p> <p>Screw threads to BS3643 ISO Metric Coarse Pitch Series (Medium Fit) Surface Finish to BS1134 in micrometres Welding Symbols to BS499 Part 2 Dimension & Geometrical Tolerances to BS308 Limits & Fits to BS4500 Remove all sharp edges and burrs</p>	<p>TOLERANCE SPECIFICATIONS UNLESS OTHERWISE STATED</p> <table border="0"> <tr> <td>SHEET METAL DIMENSIONS</td> <td>MACHINED DIMENSIONS</td> </tr> <tr> <td>0 to 300 ± 1.00</td> <td>0 to 150 ± 0.30</td> </tr> <tr> <td>300 to 1000 ± 2.00</td> <td>Over 150 ± 0.60</td> </tr> <tr> <td>Over 1000 ± 3.00</td> <td></td> </tr> <tr> <td>ANGULAR DIMENSIONS</td> <td>UNMACHINED DIMENSIONS</td> </tr> <tr> <td>± 0°-30'</td> <td>0 to 150 ± 0.50</td> </tr> <tr> <td></td> <td>Over 150 ± 1.50</td> </tr> </table>	SHEET METAL DIMENSIONS	MACHINED DIMENSIONS	0 to 300 ± 1.00	0 to 150 ± 0.30	300 to 1000 ± 2.00	Over 150 ± 0.60	Over 1000 ± 3.00		ANGULAR DIMENSIONS	UNMACHINED DIMENSIONS	± 0°-30'	0 to 150 ± 0.50		Over 150 ± 1.50	<p>ALL DIMENSIONS IN MILLIMETRES</p> <p>THIRD ANGLE PROJECTION ☉</p> <p>For all material, weld and finish specifications refer to purchase/works order unless stated otherwise</p>	<p>ISSUE B</p> <p>CLIENT HOPPER AND FLANGE DETAIL ADDED FOR CLARITY</p> <p>MS 18/06/07</p>	<p>ISSUE A</p> <p>ISSUED FOR CLIENT APPROVAL</p> <p>MS 11/06/07</p>	<p>Kek-Gardner Powder Processing Equipment Kek-Gardner Ltd Springwood Way, Macclesfield, Cheshire, SK10 2ND Tel: +44 (0)1625 412000 Fax: +44(0)1625 412002 Email: sales@kekgardner.co.uk Web: www.kekgardner.com</p>	<p>DRAWN BY M. SMAR</p>
			SHEET METAL DIMENSIONS	MACHINED DIMENSIONS																	
0 to 300 ± 1.00	0 to 150 ± 0.30																				
300 to 1000 ± 2.00	Over 150 ± 0.60																				
Over 1000 ± 3.00																					
ANGULAR DIMENSIONS	UNMACHINED DIMENSIONS																				
± 0°-30'	0 to 150 ± 0.50																				
	Over 150 ± 1.50																				
<p>APPROVED BY</p>	<p>TITLE M303C KIBBLER 3Kw DRIVE HINGED & I/L L.H. & END DOORS</p>	<p>SCALE 1:10</p>	<p>DATE 05/06/07</p>																		