

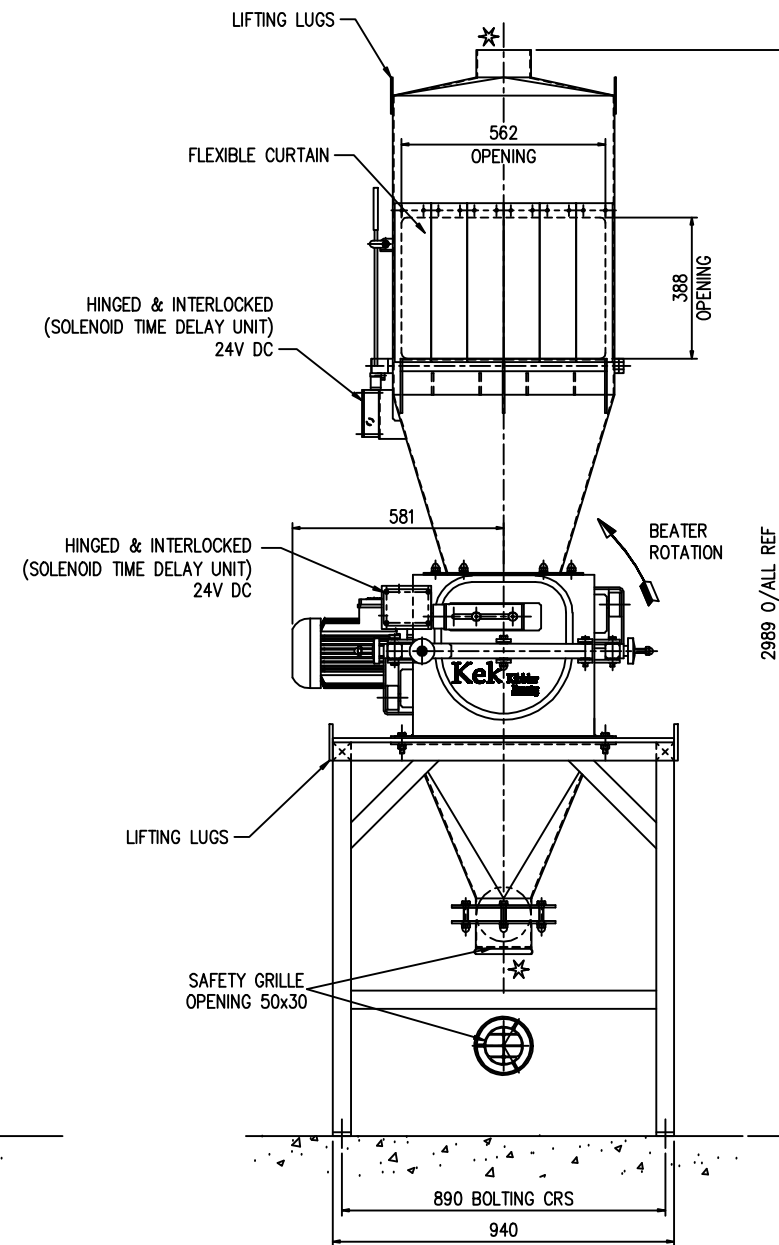
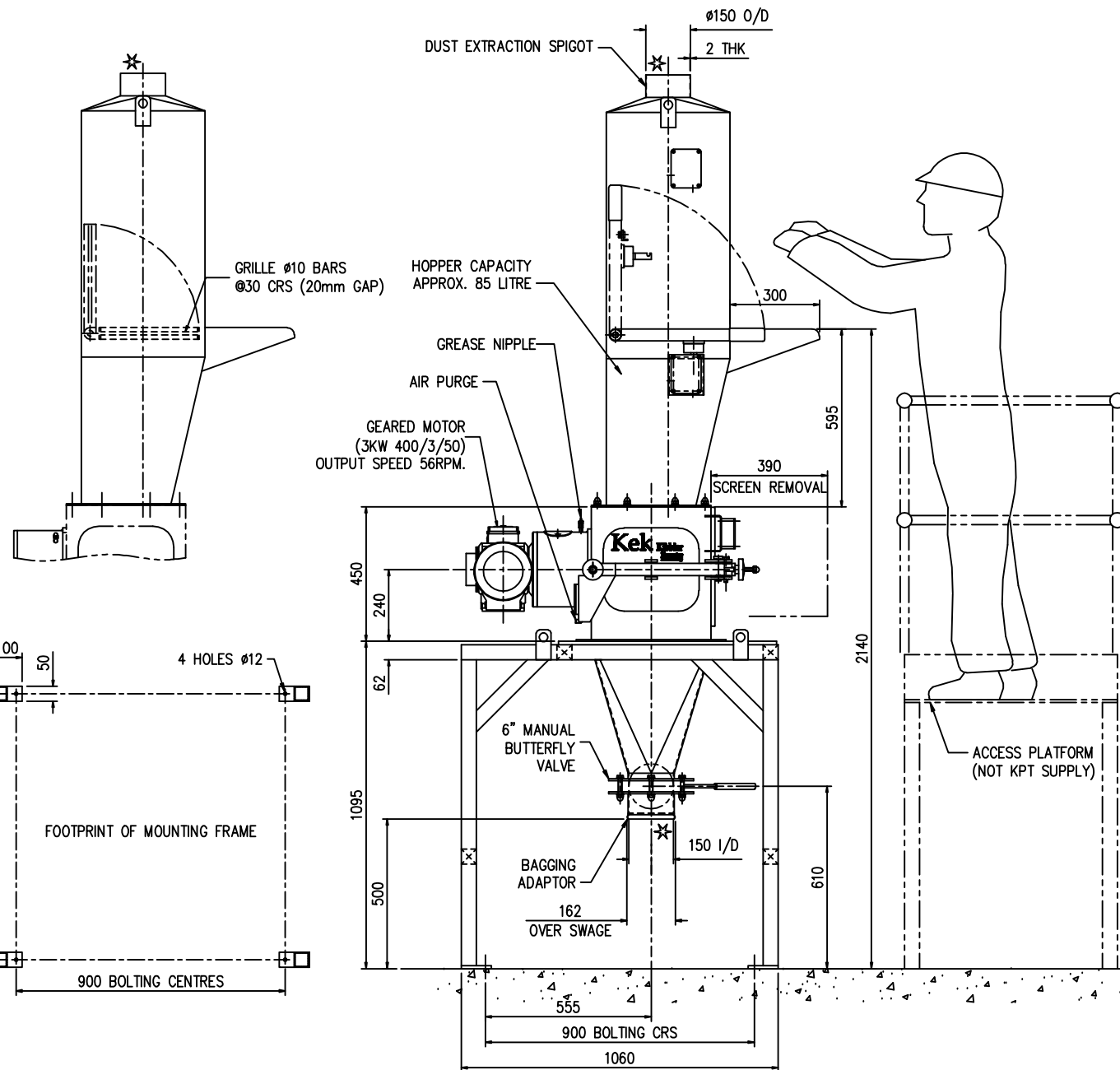
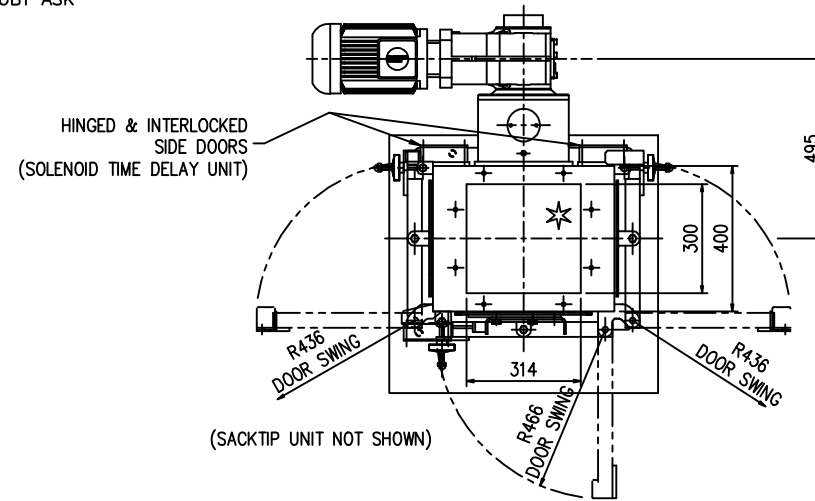
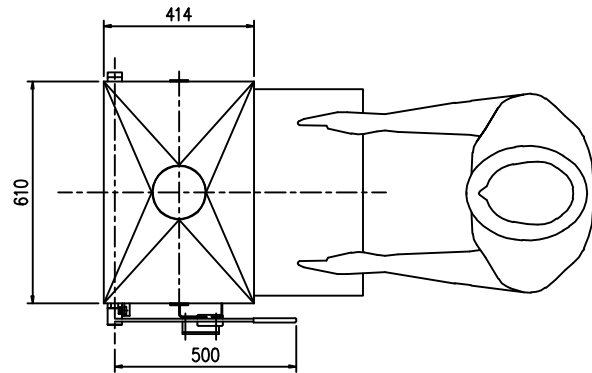
DO NOT SCALE DRAWING - IF IN DOUBT ASK

NOTE: *

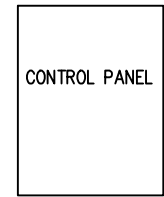
1) WHEN SAFETY GRILLS ARE NOT FITTED BY KEMUTEC; INLET AND OUTLET CONNECTIONS MUST BE SUITABLY GUARDED TO PREVENT OPERATOR ACCESS TO ROTATING/MOVING PARTS IN LINE WITH RELEVANT SAFETY REGULATIONS (SEE BS EN 294/BS5304:1988).

2) WHEN THE CONTROL PANEL IS NOT SUPPLIED BY KEMUTEC, SAFETY INTERLOCKS MUST BE WIRED INTO MOTOR CONTROL CIRCUIT (BY CLIENT) TO PREVENT THE MOTOR RUNNING, OR DE-ENERGISE MOTOR IF ALREADY RUNNING, SHOULD THE INTERLOCKS BE ACTUATED.

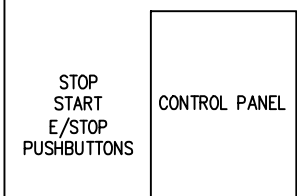
3) TOTAL OF 4OFF SOLENOID INTERLOCK SWITCHES PROVIDED, POWER TO RELEASE.



Ex II 3DG T135°C x



MAIN CONTROL PANEL - SAFE AREA



OPERATOR CONTROL PANEL
ATEX ZONES 2 & 22 T4 Eexde

THIS DRAWING IS THE PROPERTY OF KEK-GARDNER LTD AND MUST NOT BE COPIED OR SHOWN TO A THIRD PARTY WITHOUT THE WRITTEN CONSENT OF THIS COMPANY. ©

NOT PLOTTED

DRAWING SPECIFICATIONS
UNLESS OTHERWISE STATED

Screw threads to BS3643
ISO Metric Coarse Pitch Series (Medium Fit)
Surface Finish to BS1134 in micrometres
Welding Symbols to BS499 Part 2
Dimension & Geometrical Tolerances to BS308
Limits & Fits to BS4500
Remove all sharp edges and burrs

TOLERANCE SPECIFICATIONS
UNLESS OTHERWISE STATED

SHEET METAL DIMENSIONS	MACHINED DIMENSIONS	UNMACHINED DIMENSIONS
0 to 300 ± 1.00	0 to 150 ± 0.30	0 to 150 ± 0.50
300 to 1000 ± 2.00	Over 150 ± 0.60	Over 150 ± 1.50
Over 1000 ± 3.00		
ANGULAR DIMENSIONS ± 0°-30'		

ALL DIMENSIONS IN MILLIMETRES

THIRD ANGLE PROJECTION ☉

For all material, weld and finish specifications refer to purchase/works order unless stated otherwise

Kek-Gardner
Powder Processing Equipment
Kek-Gardner Ltd
Springwood Way, Macclesfield, Cheshire, SK10 2ND
Tel: +44 (0)1625 412000 Fax: +44(0)1625 412002
Email: sales@kekgardner.co.uk Web: www.kekgardner.com

DRAWN BY
D. Sargent

CHECKED BY

APPROVED BY

TITLE
M303C KIBBLER (ATEX 2/22)
C/W FEED HOPPER

SCALE
1:10

DRG No
A1 B41626001

ISSUE
B

DATE
16/06/08