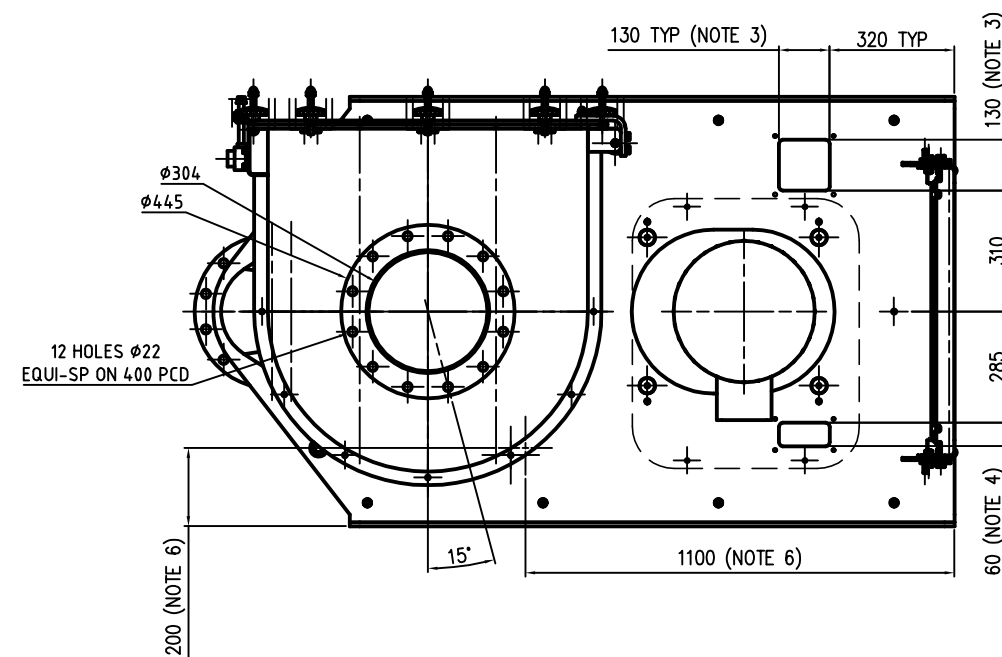


NOTES

- \* 1. INLET & OUTLET CONNECTIONS MUST BE SUITABLY GUARDED BY CLIENT TO PREVENT OPERATOR ACCESS TO ROTATING PARTS IN LINE WITH RELEVANT SAFETY REGULATIONS (E.G. BS EN 294 / BS5304:1988)
- 2. CONE MILL SUPPLIED WITH CASTELL MAI INTERLOCK FITTED TO INSPECTION DOOR AND FREE STANDING CASTELL FSK63 4 POLE 63 AMP KEY OPERATED ISOLATION SWITCH. SWITCH TO BE WIRED INTO CONTROL CIRCUIT TO PREVENT MOTOR RUNNING OR DE-ENERGISE MOTOR IF ALREADY RUNNING WHEN INTERLOCK IS DISENGAGED FOR ACCESS TO MILLING CHAMBER VIA INSPECTION DOOR. SWITCH TO BE MOUNTED IN A SAFE AREA DISTANT ENOUGH FROM THE CONEMILL TO ENSURE THAT A 30 SECOND TIME DELAY ELAPSES BETWEEN REMOVAL OF THE KEY FROM THE ISOLATION SWITCH AND INSERTION OF THE KEY INTO THE CONEMILL MOUNTED INTERLOCK.
- 3. 3 THK SS GLAND PLATE FOR CABLE ACCESS BENEATH DRIVE COVER. DRILL TO SUIT.
- 4. 3 THK SS GLAND PLATE FOR CABLE ACCESS WITHIN MOTOR SHROUD (WHERE USED). DRILL TO SUIT.
- 5. 18.5 kW METRIC FRAME OR 25 HP NEMA FRAME (FOR USA) ELECTRIC 4 POLE 3 PHASE MOTOR. IP55 ENCLOSURE.
- 6. SEAL AIR PURGE CONNECTION FOR 6 MM OD TUBE. REQUIRES CLEAN DRY COMPRESSED AIR SUPPLY REGULATED AT 0-0.1 BAR (0-15 PSI).
- 7. BEATER SPEED 1,000 REV/MIN @ 50 Hz.
- 8. EST MASS 800 Kg.



THIS DRAWING IS THE PROPERTY OF KEK-GARDNER LTD AND MUST NOT BE COPIED OR SHOWN TO A THIRD PARTY WITHOUT THE WRITTEN CONSENT OF THIS COMPANY. ©

NOT PLOTTED

**DRAWING SPECIFICATIONS**  
UNLESS OTHERWISE STATED

Screw threads to BS3643  
ISO Metric Coarse Pitch Series (Medium Fit)  
Surface Finish to BS1134 in micrometres  
Welding Symbols to BS499 Part 2  
Dimension & Geometrical Tolerances to BS308  
Limits & Fits to BS4500  
Remove all sharp edges and burrs

**TOLERANCE SPECIFICATIONS**  
UNLESS OTHERWISE STATED

SHEET METAL DIMENSIONS 0 to 300 ± 1.00 300 to 1000 ± 2.00 Over 1000 ± 3.00	MACHINED DIMENSIONS 0 to 150 ± 0.30 Over 150 ± 0.60
ANGULAR DIMENSIONS ± 0°-30'	UNMACHINED DIMENSIONS 0 to 150 ± 0.50 Over 150 ± 1.50

ALL DIMENSIONS IN MILLIMETRES

THIRD ANGLE PROJECTION

For all material, weld and finish specifications refer to purchase/works order unless stated otherwise

ISSUE C  
NOTE 2 UPDATED FOR TIME ELAPSED INTERLOCK REQUIREMENT.  
CH 17/03/04

ISSUE B  
DESIGN CONSOLIDATED FOR KEMUTEC STD.  
CH 14/10/03

ISSUE A  
FIRST ISSUED.  
BA 28/01/99

**Kek-Gardner**  
Powder Processing Excellence  
Kek-Gardner Ltd  
Springwood Way, Macclesfield, Cheshire, SK10 2ND  
Tel: +44 (0)1625 412000 Fax: +44(0)1625 412002  
Email: sales@kekgardner.co.uk Web: www.kekgardner.com

TITLE  
GENERAL ARRG  
CM680 CONE MILL

DRG No  
A4 DS475

ISSUE  
A

DATE  
14/01/03

DRAWN BY  
E HOWE

CHECKED BY

APPROVED BY

SCALE  
1:10

DATE  
14/01/03