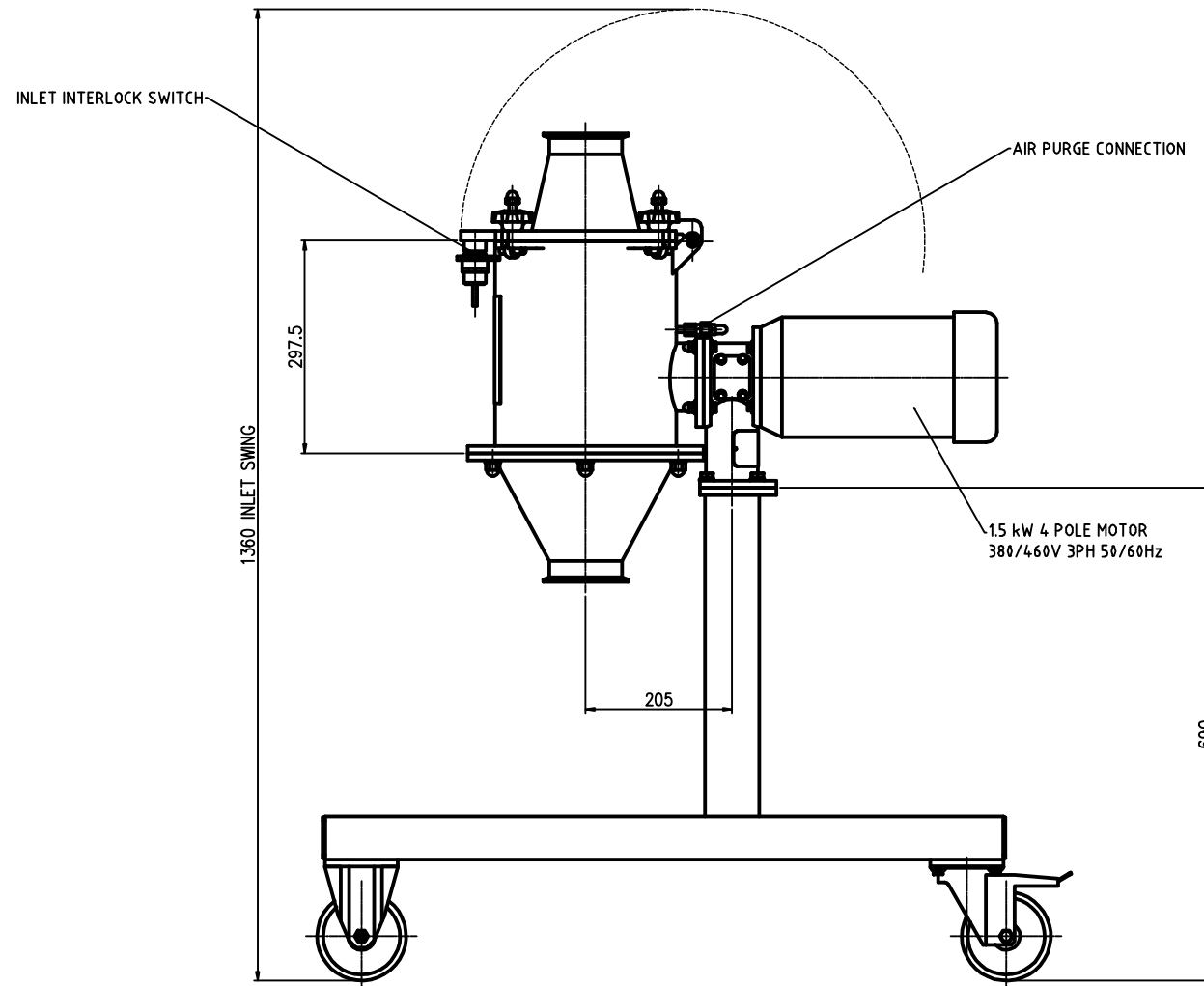
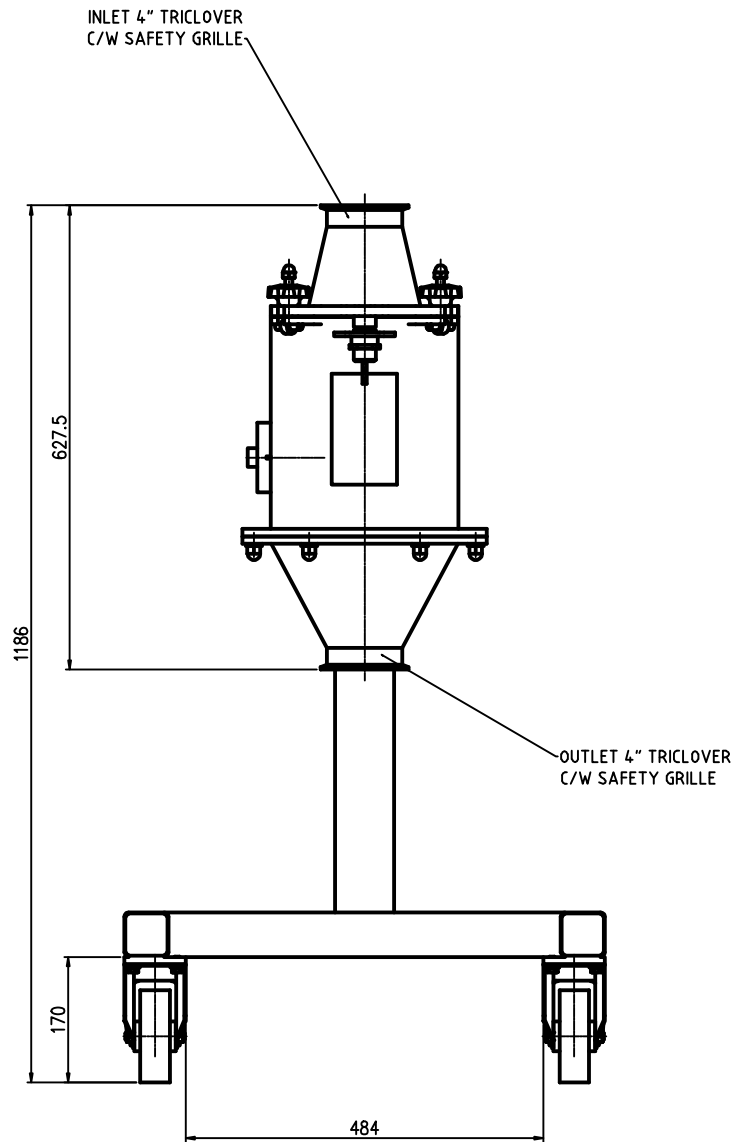
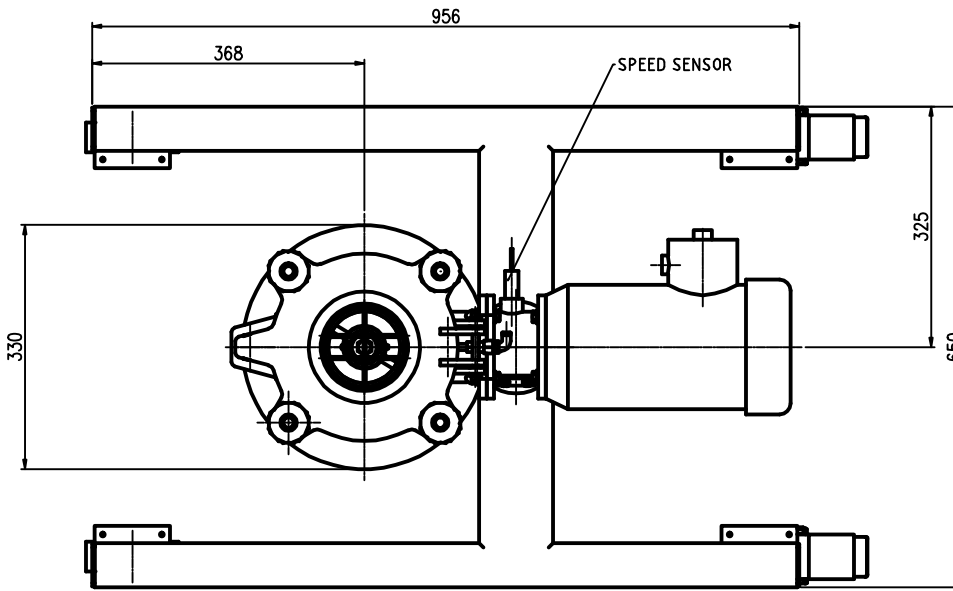


NOTES

INTERLOCK SWITCH MUST BE WIRED INTO MOTOR CONTROL CIRCUIT TO PREVENT THE MOTOR RUNNING OR DE-ENERGISE THE MOTOR IF ALREADY RUNNING SHOULD THE INTERLOCK BE ACTUATED BY OPENING THE INLET REFER TO INSTRUCTION MANUAL INTERLOCK PROVIDED WITH 1 PAIR N/C CONTACTS AND 1 PAIR N/O CONTACTS APPROX NET WEIGHT: 120kg SPEED RANGES: 1440/1700 RPM (50/60 Hz SUPPLY) DIRECT DRIVE 350-1440 (50 Hz) 450-1700 (60 Hz) RPM UNDER INVERTER CONTROL



THIS DRAWING IS THE PROPERTY OF KEK-GARDNER LTD AND MUST NOT BE COPIED OR SHOWN TO A THIRD PARTY WITHOUT THE WRITTEN CONSENT OF THIS COMPANY. ©

DRAWING SPECIFICATIONS UNLESS OTHERWISE STATED

Screw threads to BS3643  
ISO Metric Coarse Pitch Series (Medium Fit)  
Surface Finish to BS1134 in micrometres  
Welding Symbols to BS499 Part 2  
Dimension & Geometrical Tolerances to BS308  
Limits & Fits to BS4500  
Remove all sharp edges and burrs

TOLERANCE SPECIFICATIONS UNLESS OTHERWISE STATED

SHEET METAL DIMENSIONS 0 to 300 ± 1.00 300 to 1000 ± 2.00 Over 1000 ± 3.00	MACHINED DIMENSIONS 0 to 150 ± 0.30 Over 150 ± 0.60
ANGULAR DIMENSIONS ± 0'-30'	UNMACHINED DIMENSIONS 0 to 150 ± 0.50 Over 150 ± 1.50

ALL DIMENSIONS IN MILLIMETRES

THIRD ANGLE PROJECTION ☉

For all material, weld and finish specifications refer to purchase/works order unless stated otherwise

ISSUE B  
SERIAL No. LABEL &  
LOGO ADDED

CH 13/02/03

ISSUE A  
ISSUED FOR  
MANUFACTURE

CH 31/01/03



TITLE  
GENERAL ARRANGEMENT  
CM170UG CONE MILL

DRG No  
A1 A13309001 SHT 1

DRAWN BY  
E HOWES

CHECKED BY

APPROVED BY

SCALE  
1:5

ISSUE  
B  
DATE  
13/02/03